

-
2000- 2001

“

”

:

:

2001

.....

««

»»

.

-

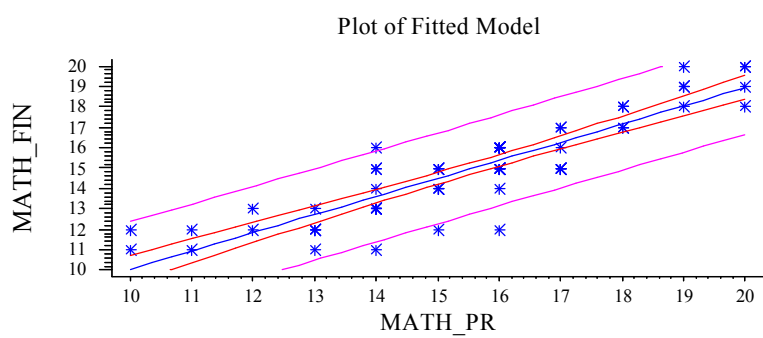
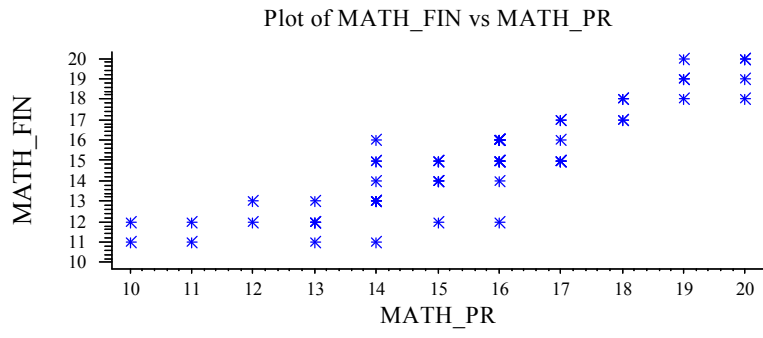
2000-

2001

.

.

2001

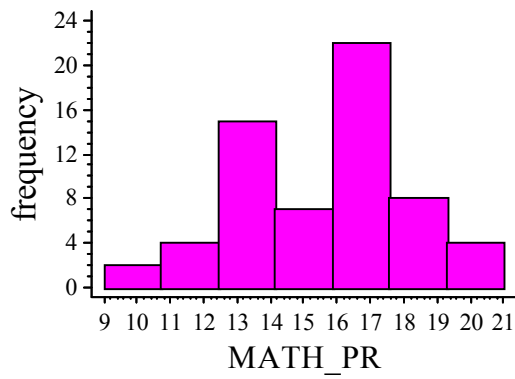


$$\text{MATH_FIN} = 1,15596 + 0,889232 * \text{MATH_PR}$$

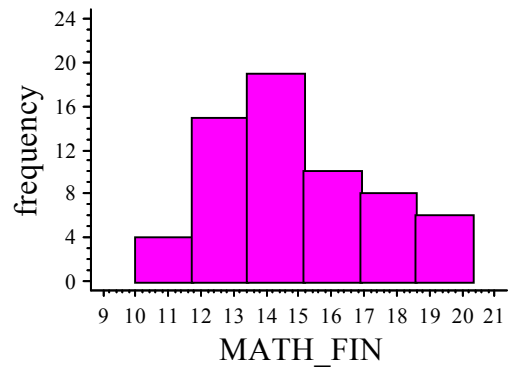
Y X

: Y=1,5596+0,889232*X.

Histogram for MATH_PR



Histogram for MATH_FIN



()

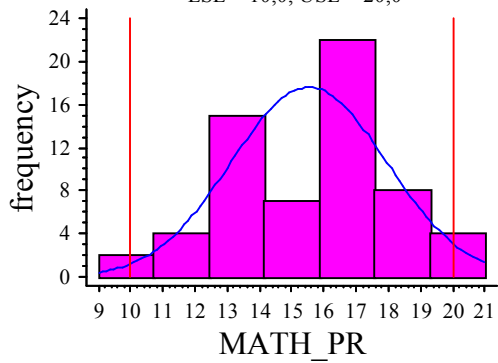
(Y)

(16,1 – 18).

(13,1 – 16).

MATH_PR

LSL = 10,0, USL = 20,0

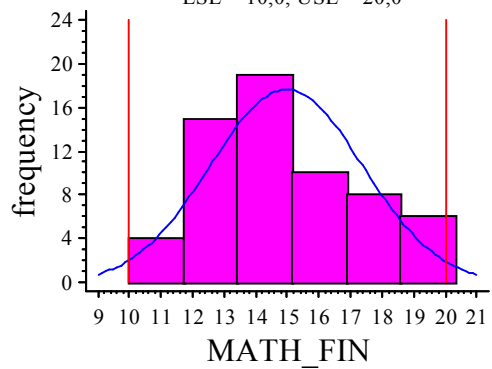


:

=62
=15,5323
=2,41388

MATH_FIN

LSL = 10,0, USL = 20,0



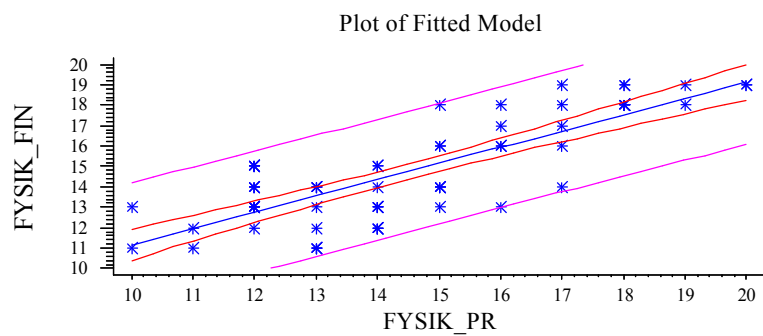
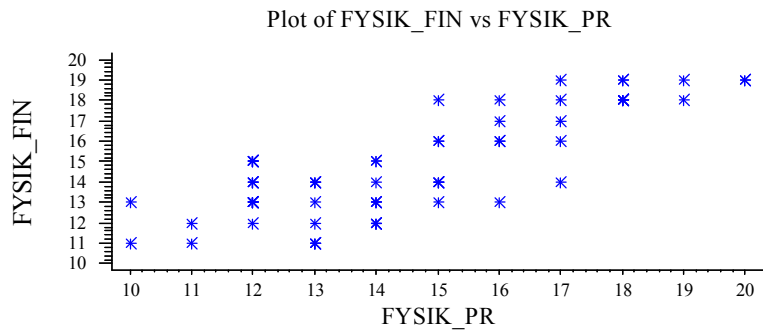
:

=62
=14,9677
=2,40878

Y

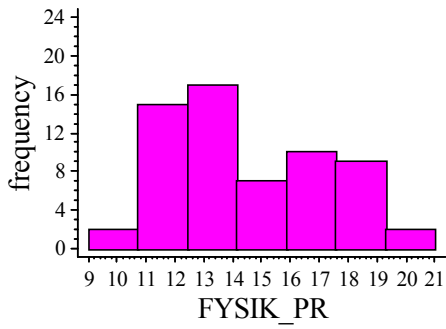
:

14

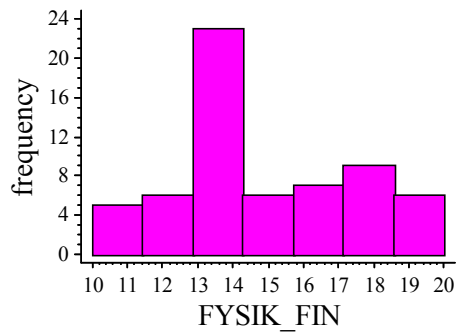


$$Y = 3,21586 + 0,795584 * X.$$

Histogram for FYSIK_PR



Histogram for FYSIK_FIN

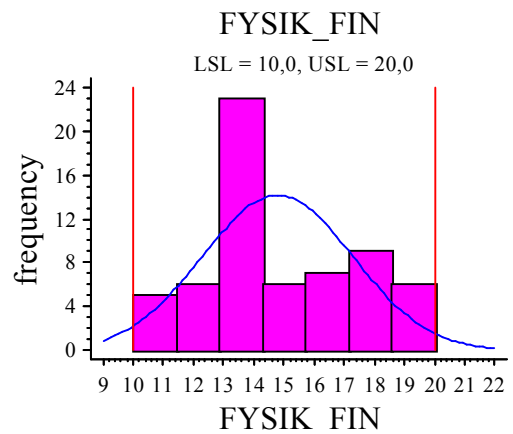
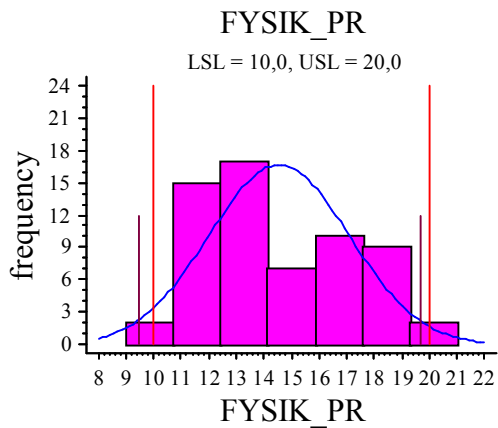


()

(Y)

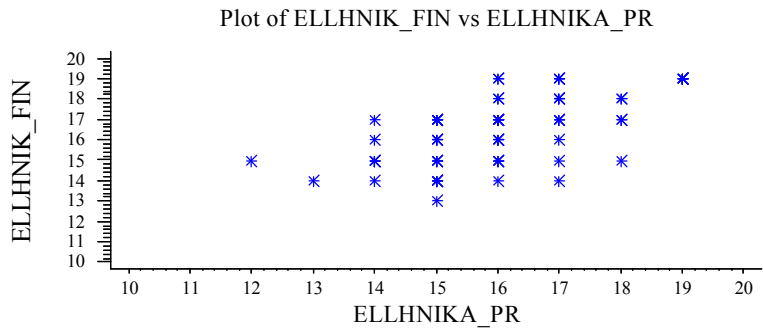
(16,1 – 18).

(13,1 – 16).



:
=62
=14,5484
=2,55226

:
=62
=14,7903
=2,4968
Y

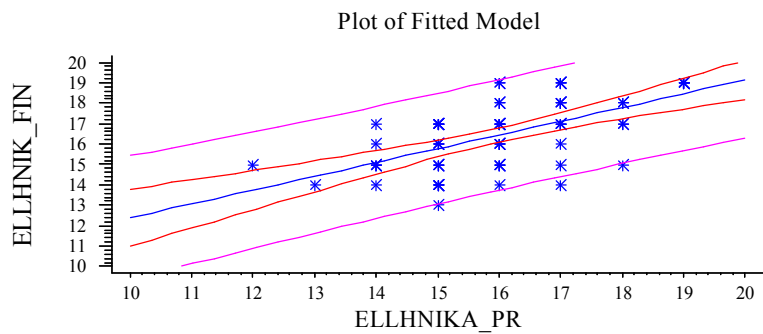


X

Y

Y

X.



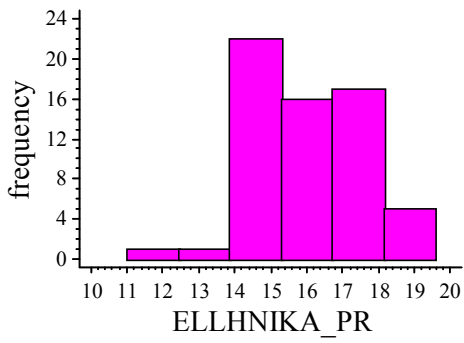
$$\text{ELLHNIK_FIN} = 5,61682 + 0,676818 * \text{ELLHNIKA_PR}$$

Y

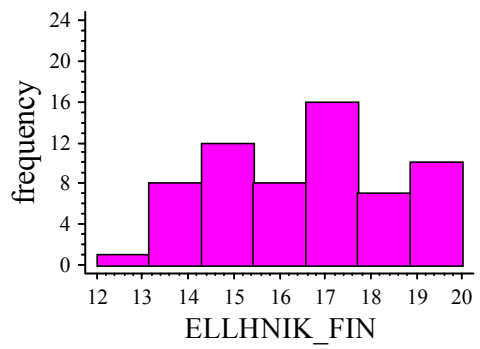
X

$$: Y=5,61682+0,676818 * X.$$

Histogram for ELLHNIKA_PR



Histogram for ELLHNIK_FIN



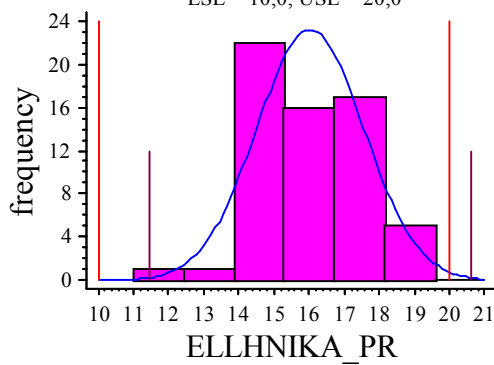
()

(Y)

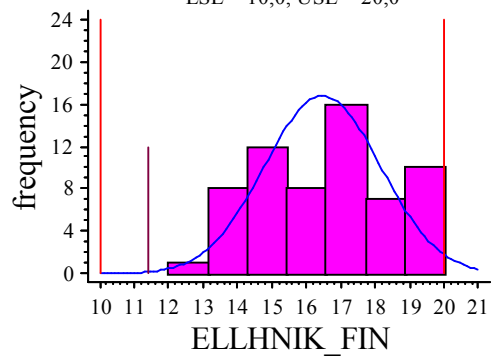
(16,1 – 18).

(16,1 – 18).

ELLHNIKA_PR
LSL = 10,0, USL = 20,0

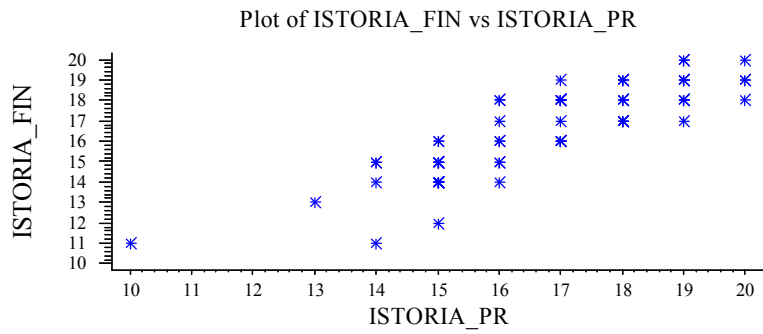


ELLHNIK_FIN
LSL = 10,0, USL = 20,0



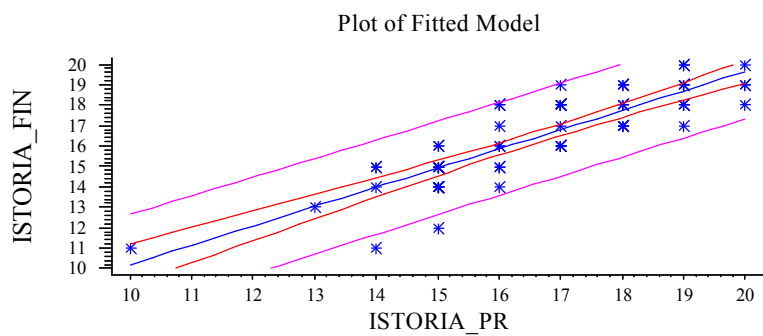
:
=62
=16,0323
=1,52539

:
=62
=16,4677
=1,68628
Y



J
X
Y

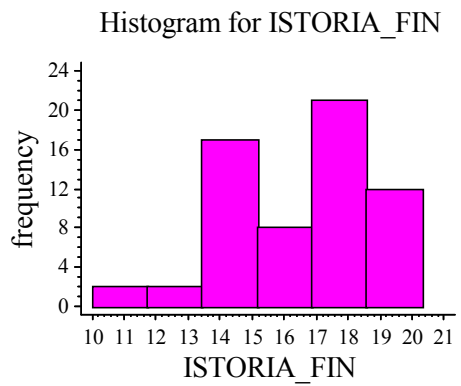
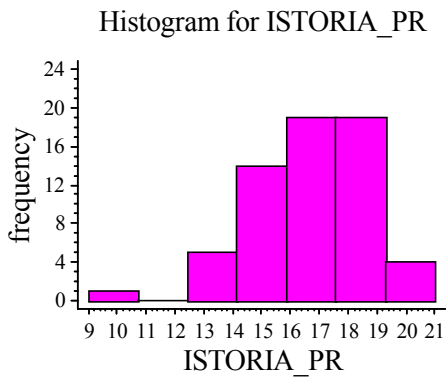
Y X.



$$\text{ISTORIA_FIN} = 0,748077 + 0,94456 \cdot \text{ISTORIA_PR}$$

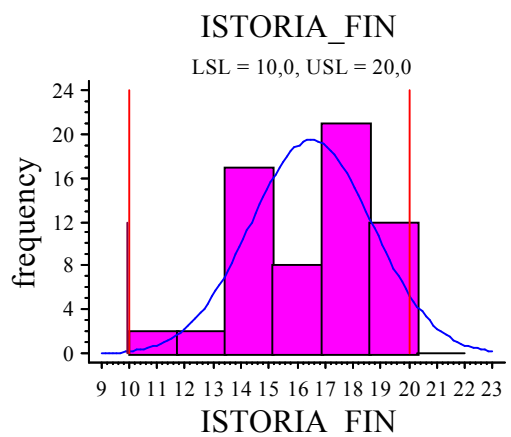
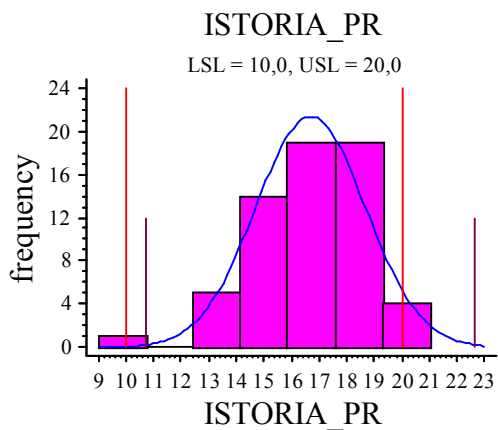
Y X

$$: Y=0,748077+0,94456 \cdot X.$$



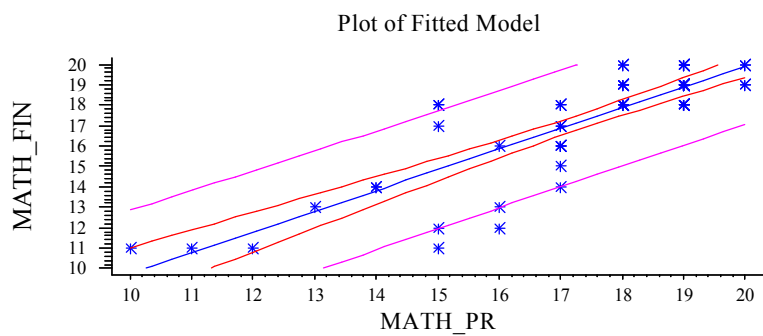
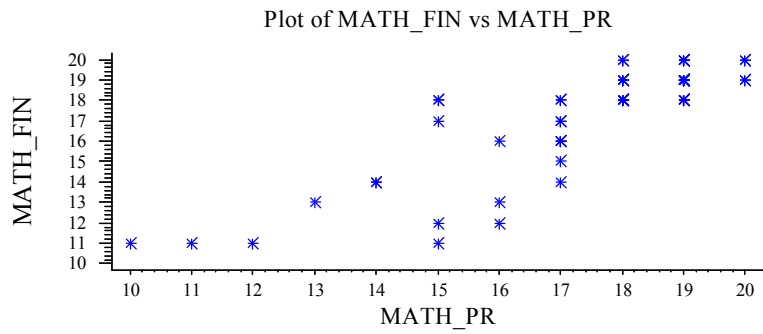
()
 ()
 16,1 – 18).

(Y)
 ()
 16,1 – 18).



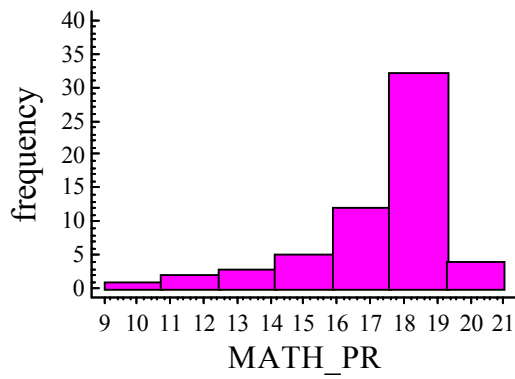
:
 =62
 =16,6935
 =1,9884

:
 =62
 =16,5161
 =2,18596
 Y

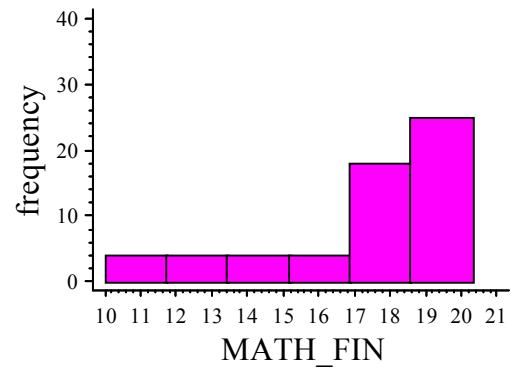


Y X
: $Y = -0,466935 + 1,02003 * X.$

Histogram for MATH_PR



Histogram for MATH_FIN



()

(Y)

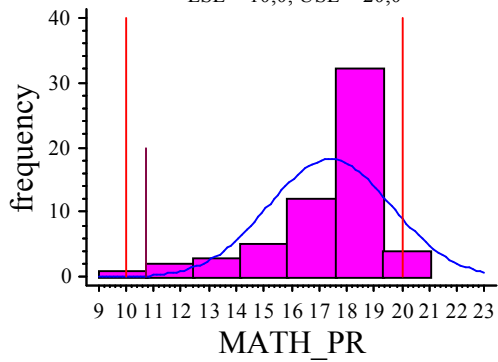
(18,1 -

(18,1 - 20).

20).

MATH_PR

LSL = 10,0, USL = 20,0

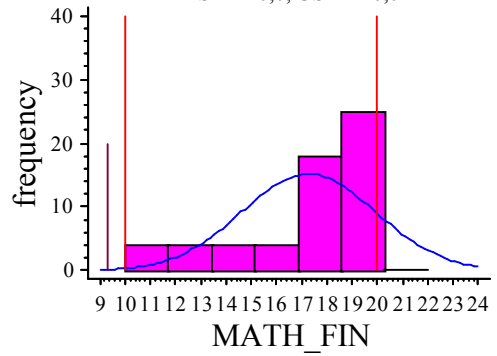


:

=59
=17,3898
=2,22072

MATH_FIN

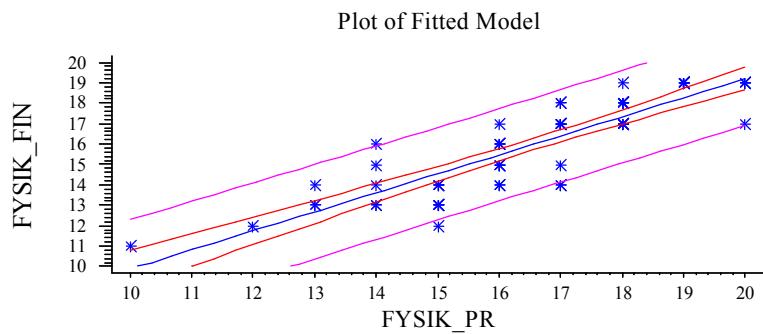
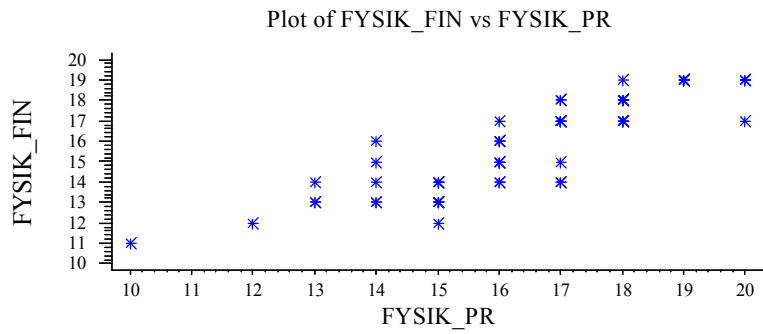
LSL = 10,0, USL = 20,0



:

=59
=17,2712
=2,66413
Y

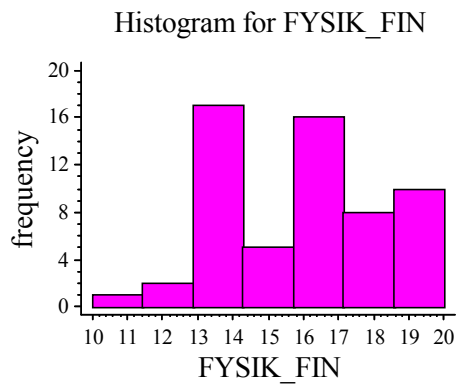
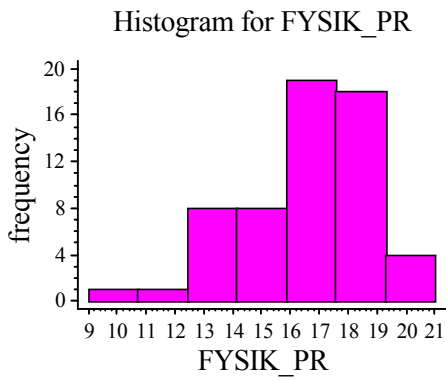
:



$$FYSIK_FIN = 0,534952 + 0,933782 * FYSIK_PR$$

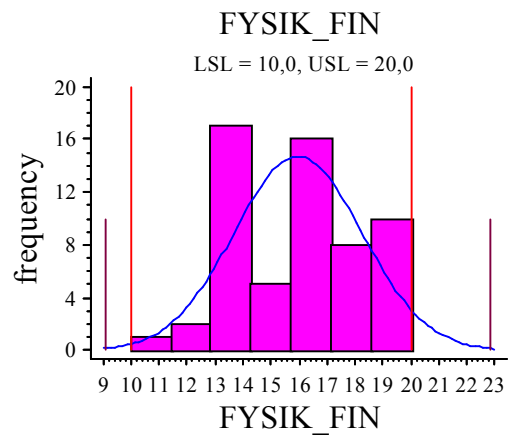
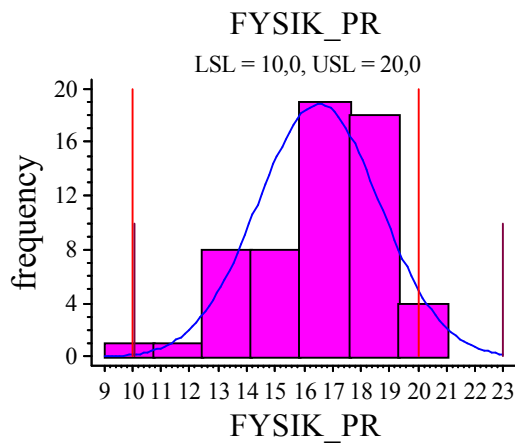
Y X

: $Y = 0,534952 + 0,933782 * X$.



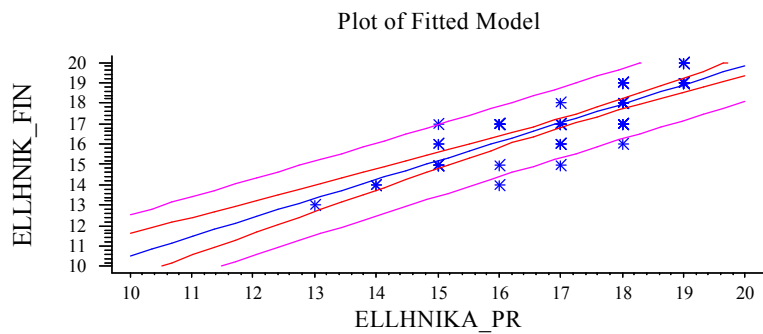
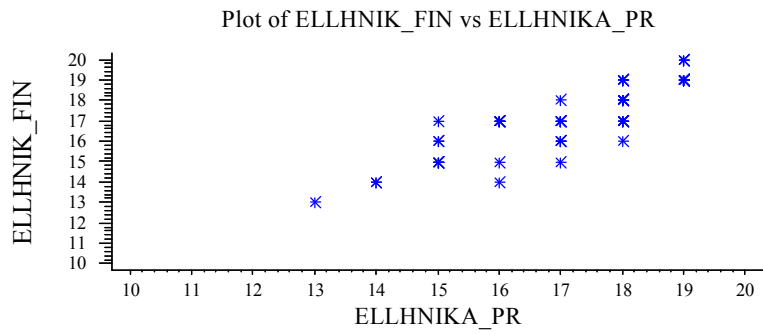
()
 ()
 16,1 – 18).

(Y)
 ()
 16,1 – 18).



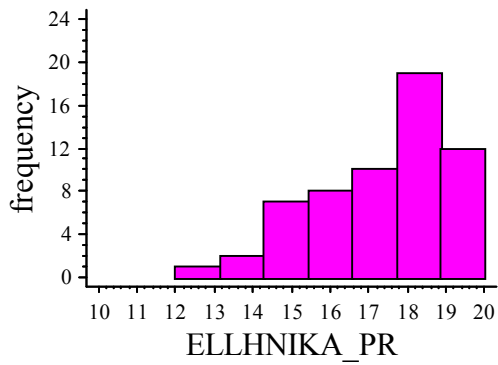
:
 =59
 =16,5254
 =2,14441

:
 =59
 =15,9661
 =2,28915
 Y

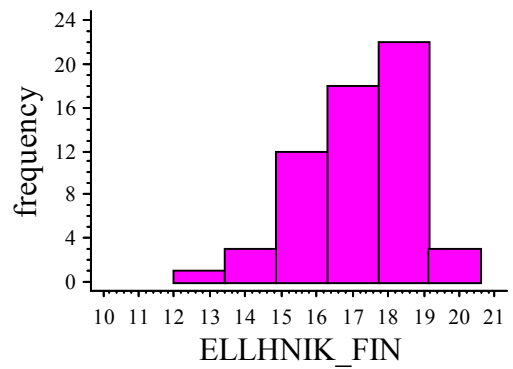


$$: Y = 1,22758 + 0,930545 * X.$$

Histogram for ELLHNIKA_PR



Histogram for ELLHNIK_FIN



()

(Y)

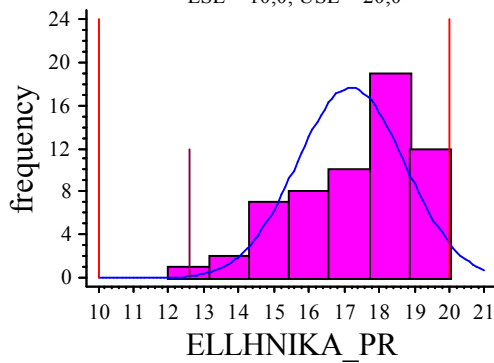
(18,1 -

(16,1 - 18).

20).

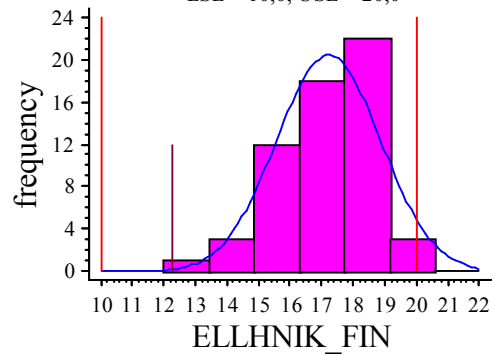
ELLHNIKA_PR

LSL = 10,0, USL = 20,0



ELLHNIK_FIN

LSL = 10,0, USL = 20,0



:

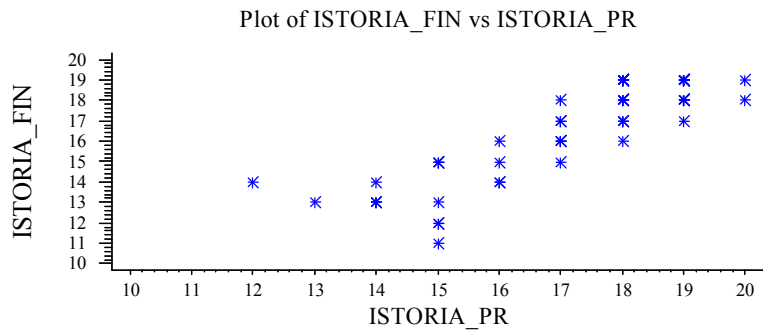
=59
=17,1864
=1,52536

:

=59
=17,2203
=1,6512

Y

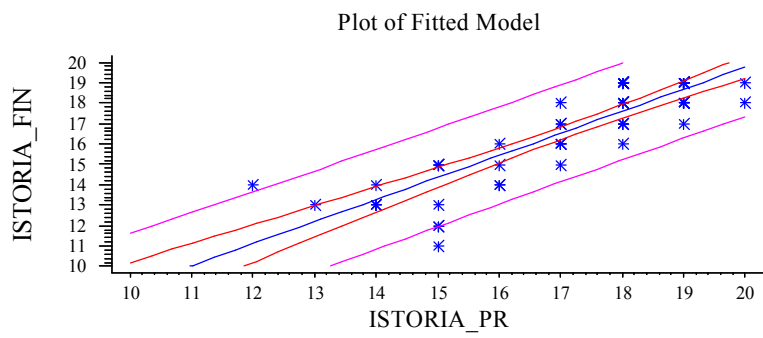
:



J
X
Y

Y

X.



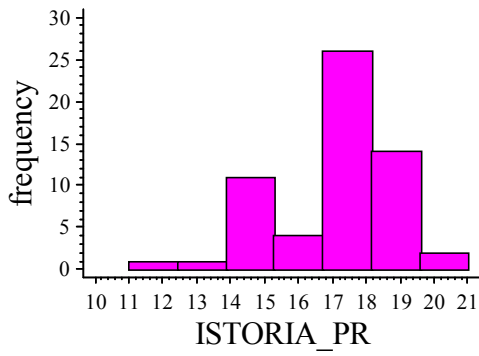
$$ISTORIA_FIN = -1,88108 + 1,08258 * ISTORIA_PR$$

Y

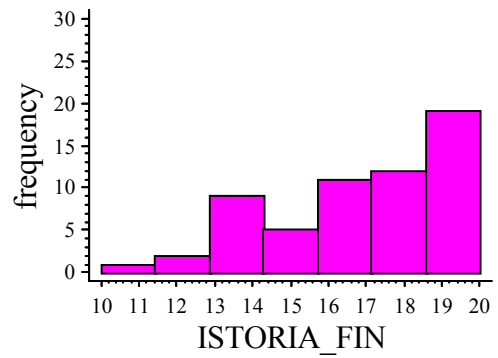
X

: $Y = -1,88108 + 1,08258 * X.$

Histogram for ISTORIA_PR



Histogram for ISTORIA_FIN



()

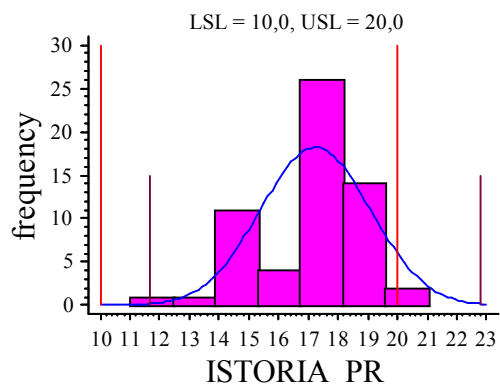
(Y)

16,1 – 18).

(

(18,1 – 20).

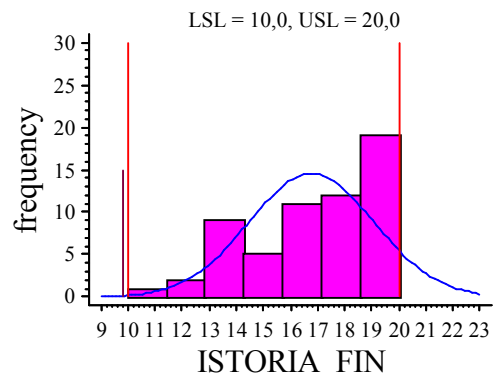
Process Capability for ISTORIA_PR



:

=59
=17,2373
=1,85081

Process Capability for ISTORIA_FIN



:

=59
=16,7797
=2,31984
Y

:

.....

,

(, test, . . .),

)

, (, test, . . .)

: . 12, . 15

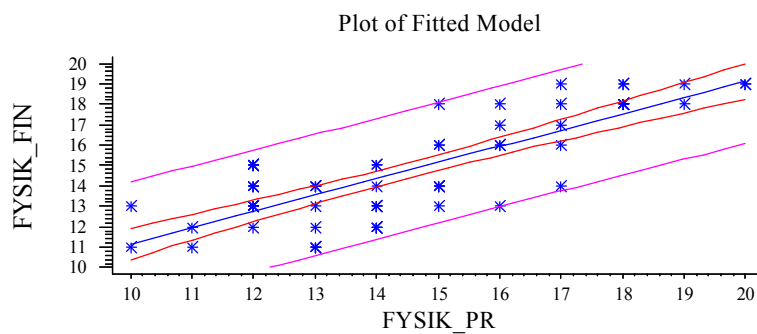
. 18;

)

: . 12, . 15 . 18;

:

)



$$FYSIK_FIN = 3,21586 + 0,795584 * FYSIK_PR$$

$$Y = 3,21586 + 0,795584 * X$$

12, 15, 18

12,7629, 15,1496 17,5364

Predicted Values

X	Predicted Y	95,00% Prediction Limits		95,00% Confidence Limits	
		Lower	Upper	Lower	Upper
12,0	12,7629	9,7853	15,7404	12,2348	13,2909
15,0	15,1496	12,195	18,1043	14,7716	15,5277
18,0	17,5364	14,5392	20,5335	16,9071	18,1656

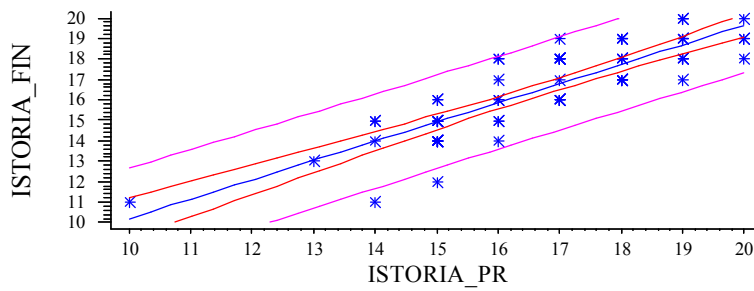
1

:

	.	.	.
.	13	15	18

)

Plot of Fitted Model



$$\text{ISTORIA_FIN} = 0,748077 + 0,94456 * \text{ISTORIA_PR}$$

.....

:

.

.

.

(

)

,

.

.

,

.