

# LEARNER TEMPLATE

## Addictively tasty

Sofie JONCKHEERE, Arzu BASOGLU & Kristel PROVOST

---

### 1. A delicious ingredient

Grouping: 

#### Worksheet 1

Which ingredient do you recognise below? .....

Which languages do you recognise? Write the language next to the word.

- |               |       |
|---------------|-------|
| 1. čokolada   | ..... |
| 2. czekolada  | ..... |
| 3. ciocolată  | ..... |
| 4. cioccolato | ..... |
| 5. sjokolade  | ..... |
| 6. chocolate  | ..... |
| 7. schokolade | ..... |
| 8. choklad    | ..... |
| 9. chocolade  | ..... |
| 10. chocolat  | ..... |



Which languages resemble each other? .....

Have you any idea why that is so? \_\_\_\_\_

2. Europe

Grouping:  (whole class)

Worksheet 1

*In which European countries are these languages official languages?  
Try this for 6 languages.*

<b>Language:</b> _____	<b>Language:</b> _____	<b>Language:</b> _____
<b>Countries:</b> _____ _____	<b>Countries:</b> _____ _____	<b>Countries:</b> _____ _____
<b>Language:</b> _____	<b>Language:</b> _____	<b>Language:</b> _____
<b>Countries:</b> _____ _____	<b>Countries:</b> _____ _____	<b>Countries:</b> _____ _____

Can you find these countries on the map of Europe?



Afterwards you can check the atlas if you were right.

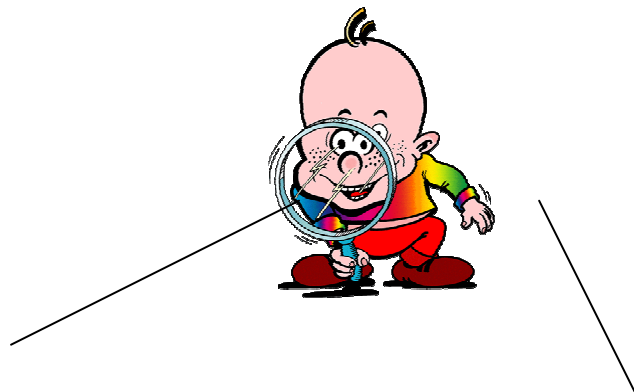
-----

### 3. Word search

Grouping: 

#### Worksheet 1

Try to find the following words: sjokolade, chocolate, schokolade, chocolate, czekolada, cioccolato, choklad and chocolat



T	F	N	S	H	W	R	E	O	O	R	E	I	F
F	N	E	J	C	W	I	R	M	O	R	G	D	F
T	Z	D	O	Z	N	Q	O	I	T	C	F	S	H
I	A	E	K	E	N	S	M	D	A	Q	C	E	S
O	I	U	O	K	E	N	R	S	L	H	R	D	D
F	T	O	L	O	N	T	A	L	O	C	O	H	C
L	F	N	A	L	F	A	A	C	C	D	C	E	C
U	R	P	D	A	H	I	O	L	C	O	R	E	S
H	M	C	E	D	A	L	O	K	O	H	C	S	A
S	I	S	H	A	A	I	N	I	I	C	K	S	S
T	E	E	T	D	M	T	J	C	C	I	O	R	I
D	A	H	E	S	C	E	N	Q	A	V	C	H	H
T	W	N	A	P	M	S	D	A	L	K	O	H	C
P	G	N	N	T	C	D	L	I	R	M	C	B	A

## 4. The origin of chocolate

Grouping: 

### Worksheet 1



The **premier contact** of the Western world with **Kakao** took place in 1528 when the Spanish **explorador** Fernando Cortez returned from Mexico with **Kakao**. At that **temps** cacao was used to make **une boisson**. The **cacaobonen** were very **duur**. Only rich **insanlar** could **payer** them. Only in 1900 **Kakao** became a national drink due to a sharp drop in **prix** of **Kakao**. The main

ingredient of chocolate is **Kakao**, made from **cacaobonen**. They come from the **fruta** of the **Kakaobaum**. **Kakaobaumen** grow in warm and humid tropical **ülkeler**, **surtout** in the **ülkeler** around the **équateur**. The best-known **fournisseurs** are Indonesia, Ecuador, Kenia, Ivory Coast... A **Kakaobaum** has to grow **tres tot four jaren** and can become **quinze metros hoog**. Most **Kakaobaumen** are pruned and become only **vier metros hoog**. That way it's easier to pick the **Früchte**. Every **arbre** gives about **dertig** to **veertig Früchte par an**. The tree has **bloemen** all year long. Big, hard **Früchte** grow out of every **bloem**. After about **cinco maanden** the **Früchte** are ripe. After these **vijf aylar** they can be picked. The ripe fruits are **geel**. They are about **zwanzig Zentimeter** long. Every **fruta** contains about **quarante tohumlar**. These seeds are the **cacaobonen**. **Kakao** is made of these **tohumlar**. Every year an **arbre** delivers **bir** to **twee kilo kakao**. They open the **Früchte** with a **couteau**. They take out the **bonen** and put them in bins. The bins are covered with big **feuilles**. After a **semaine** the **bonen** are **bruin**. The **bonen** are taken out of the bins and put in the **Sonne** to dry. The **bonen** are put in big **sacs** and transported to Europe by **Fahrzeug**. De **sacs** are unloaded in the **haven** of Amsterdam and they take them to the chocolate fabrics by **camions**. In the fabrics they are converted into chocolate.



Answer the following questions:

Who brought the cacao to Europe? \_\_\_\_\_

In which year was that? \_\_\_\_\_

Which country does the cacao come from? \_\_\_\_\_

Where do cacao trees grow? \_\_\_\_\_

\_\_\_\_\_

\_\_\_\_\_

How much cacao does a cacao tree deliver a year? \_\_\_\_\_

How many seeds does a cacao tree fruit contains? \_\_\_\_\_

\_\_\_\_\_

## 5. Quartet

Grouping: 

\_\_\_\_\_

## 6. Alphabet game

Grouping: 

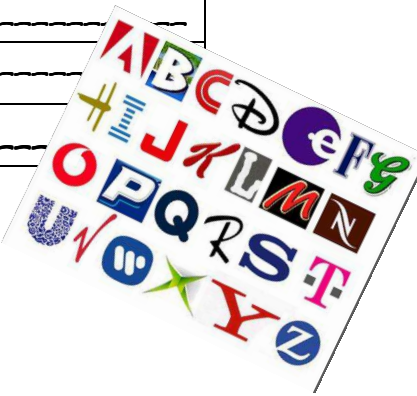
### Worksheet 1

Try to make a word with every letter of the alphabet. The words must have something to do with this lesson about chocolate. Translate this word into your mother tongue and in another language you know.

English	Your mothertongue	Another language
A _____	_____	_____
B _____	_____	_____
C _____	_____	_____
D _____	_____	_____
E _____	_____	_____
F _____	_____	_____
G _____	_____	_____
H _____	_____	_____
I _____	_____	_____
J _____	_____	_____
K _____	_____	_____
L _____	_____	_____
M _____	_____	_____
N _____	_____	_____
O _____	_____	_____
P _____	_____	_____
Q _____	_____	_____
R _____	_____	_____
S _____	_____	_____
T _____	_____	_____
U _____	_____	_____
V _____	_____	_____



W _____	_____	_____
X _____	_____	_____
Y _____	_____	_____
Z _____	_____	_____



-----