

Author: Kostas Papamichalis  
Dr. of Theoretical Physics

## **Elastic collisions between particles: The relativistic and the Newtonian point of view**

### **Synopsis**

In this work, we compose the simulation of two point-particles elastic interaction, in the contexts of the Newtonian and relativistic mechanics. The corresponding theoretical models are developed for the special case where the particles are merged into one point -their center of mass- and then after their interaction are emitted with new constant velocities <sup>(2)</sup>. During this process, each particle does not lose its identity; the (rest) mass of each particle remains invariant. This simple situation of emerging and emitting particles is a necessary restriction for the composition of the relativistic model: it implies that in the center-of-mass-frame there is a time-moment that the velocities of the particles are zero and the spatial parts of the four-forces by which the particles interact, are of the Newtonian action-reaction form. Hence, one can imply the four-momentum conservation during the particles' interaction, in any inertial-Cartesian reference frame.

### **Key-Concepts**

Minkowski space – World lines of moving particles – Proper-time – World-time – Four-velocity – Four-momentum – Minkowski force – Inertial reference systems in Cartesian coordinates – The Lorentz transformations – The equations of motion in a Minkowski space – System of interacting particles – Center-of-Mass inertial system of reference – Four-momentum of a system – The four-momentum conservation for a system of particles

### **Contents**

Paragraph 1: The four-force and the Minkowski equations of motion

Paragraph 2: Collision and emission of particles at a point of the Minkowski space

Paragraph 3: The relativistic model of two-particle elastic collision

Paragraph 4: The Newtonian model of two-particle elastic collision

Paragraph 5: Activities

References

## Paragraph 1: The four-force and the Minkowski equations of motion

Consider two particles P1 and P2 with masses  $m_1, m_2$  respectively, moving in the Minkowski space-time continuum  $M$ . In  $M$  we have defined an inertial, Cartesian coordinate system, named "Laboratory System (LS)". According to the LS, P2 has been placed at the point  $(0,0,0,0)$  of  $M$  and P1 at the point  $(0, -a, 0, 0)$ ,  $a > 0$

The clocks set at the spatial points of  $M$  are all synchronized, and they indicate the world time  $t$  <sup>(4,5)</sup> of  $M$  in the lab-system LS. The infinitesimal interval at any point of  $M$  is:

$$\Delta s = (g_{\mu\nu} \Delta x^\mu \Delta x^\nu)^{1/2}$$

...where:

$$[g_{\mu\nu}] = \begin{pmatrix} 1 & 0 & 0 & 0 \\ 0 & -1 & 0 & 0 \\ 0 & 0 & -1 & 0 \\ 0 & 0 & 0 & -1 \end{pmatrix}$$

Hence:

$$\Delta s = (c^2 \Delta t^2 - (\Delta x^1)^2 - (\Delta x^2)^2 - (\Delta x^3)^2)^{1/2} = \frac{c}{\gamma} \Delta t$$

$$\gamma(v) = \left(1 - \frac{\vec{v} \cdot \vec{v}}{c^2}\right)^{-1/2}, \quad \vec{v} = \frac{d\vec{r}}{dt} = (\dot{x}^1, \dot{x}^2, \dot{x}^3), \quad v = \|\vec{v}\| = \sqrt{(\dot{x}^1)^2 + (\dot{x}^2)^2 + (\dot{x}^3)^2}$$

It is assumed that P1 and P2 interact only when their spatial distance, at the same time moment, is less than an infinitesimal positive quantity  $\varepsilon$ . Their world lines are solutions of the Minkowski equations of motion <sup>(2,5)</sup>:

Particle P1:

$$\frac{dP_1^\mu}{d\tau_1} = K_{12}^\mu \quad (1.1a)$$

Particle P2:

$$\frac{dP_2^\mu}{d\tau_2} = K_{21}^\mu \quad (1.1b)$$

With  $\tau_1, \tau_2$  we symbolize the proper time of the particles, and with  $P_1, P_2$  their four-momenta <sup>(1,2,3,4,5)</sup>.  $K_{12}, K_{21}$  are the Minkowski forces between the particles P1 and P2. The Greek indices take the values 0,1,2,3.

For a particle with mass  $m$ , the four-momentum  $P$  is related to the four-velocity  $U$ :  $P = mU$

The components of  $U$  are <sup>(2,5)</sup>:  $U^\mu = \frac{dx^\mu}{d\tau}$ ,  $U^0 = \gamma c$ ,  $U^j = \gamma \frac{dx^j}{dt} = \gamma v^j$

The square of the norm of  $U$  is constant:  $\langle U, U \rangle = g_{\mu\nu} U^\mu U^\nu = \gamma^2 (c^2 - \vec{v}^2) = c^2$

Hence, it is implied that:  $\left\langle \frac{dU}{d\tau}, U \right\rangle = 0$  and  $\langle U, K \rangle = 0$ , or:

$$cK^0 - \sum_{j=1}^3 K^j v^j = 0 \quad (1.2)$$

The four-momentum is called and "energy-momentum four-vector"; this is because its components can take the form:

$$P^0 = mc\gamma = \frac{E}{c}, \quad P^j = \gamma m v^j = \gamma p^j$$

...where  $E = \frac{mc^2}{\sqrt{1 - \frac{\vec{v} \cdot \vec{v}}{c^2}}}$  is defined as the energy of the particle and  $\vec{p} = m\vec{v}$  is the momentum

according to the Newtonian definition.

By considering as free parameter the world time  $t$ , the equations of the motion take the form:

$$\frac{d}{dt}(m_1 c \gamma(v_1)) = \frac{1}{\gamma(v_1)} K_{(12)}^0, \quad \frac{d}{dt}(m_1 \gamma(v_1) v_1^j) = \frac{1}{\gamma(v_1)} K_{(12)}^j \quad (1.3a)$$

$$\frac{d}{dt}(m_2 c \gamma(v_2)) = \frac{1}{\gamma(v_2)} K_{(21)}^0, \quad \frac{d}{dt}(m_2 \gamma(v_2) v_2^j) = \frac{1}{\gamma(v_2)} K_{(21)}^j \quad (1.3b)$$

The initial four-velocities of P1 and P2 are, respectively:

$$U_1^0 = \gamma(v_0) c, \quad U_1^1 = \gamma(v_0) c v_0, \quad U_1^2 = 0, \quad U_1^3 = 0$$

...where:  $v_0 > 0$

$$U_2^0 = c, \quad U_2^1 = 0, \quad U_2^2 = 0, \quad U_2^3 = 0$$

In the case of our model of the "elastic collision", we assume that the Minkowski force acting from each particle to the other is zero everywhere in the space-time continuum, except for an infinitesimal neighborhood around the event  $X_0$  with coordinates  $(ct_0, 0, 0, 0)$  (figure 1).

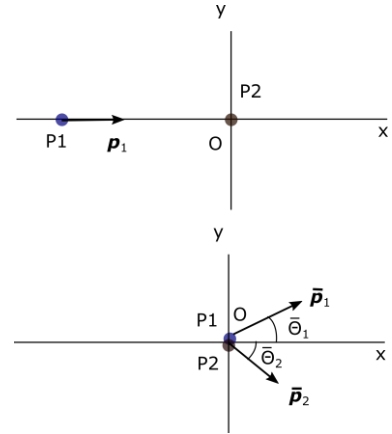


Figure 1: Configuration of the system in the context of our model.

[Return to the contents](#)

## Paragraph 2: Collision and emission of particles at a point of the Minkowski space

In the treatment of any many-particles problem like the collisions, a fundamental quantity is the total momentum of the particles. In Newtonian Mechanics, it is defined as the sum of the momentums of each particle. This summation is accomplished by the parallel transport of the momentum vectors at a specific point of the Euclidean space they are moving. This transportation is legitimate because in Newtonian Mechanics the space is Euclidean and the time is an invariant quantity, irrelevant of space. *What about the Minkowski space-time continuum?*

The idea of the parallel transport of a vector is possible to get generalized for any space-time continuum determined by any metric tensor  $[g_{\mu\nu}]$  <sup>(2,4,5)</sup>. Anyway, for the case of the Minkowski space and an inertial-Cartesian coordinate system, it can be proved <sup>(2,4,5)</sup> that the coordinates of the parallel-transporting vectors do not change; we can define the total momentum of the particles as the four-vector  $P$  with coordinates:

$$P^\mu = P_1^\mu + P_2^\mu \quad \text{or:} \quad P^0 = c(m_1 \gamma_1 + m_2 \gamma_2), \quad P^j = m_1 \gamma_1 v_1^j + m_2 \gamma_2 v_2^j$$

...where:  $\gamma_1 = \gamma(v_1), \gamma_2 = \gamma(v_2)$ ...

The Minkowski equations of motion are covariant, i.e., their form is the same in any inertial Cartesian coordinate system. Let us write 1.3 in the center-of-mass inertial system (CMS) of P1 and P2. This reference frame is defined by the conditions: a) the CM system is an inertial Cartesian coordinate system, b) the total spatial momentum of P1 and P2 is zero. Assume that the primed quantities refer to the CMS; then, we write:

$$P'^j = P_1'^j + P_2'^j = m_1 \gamma_1' v_1'^j + m_2 \gamma_2' v_2'^j = 0 \quad (2.1)$$

Symbolize  $t'$  the world time of  $M$  in the CMS and conjecture that at the time  $t'_0$  both particles are at their center of mass and their velocities equal to zero: the particles "merge" into their center of mass and then "emerge" to different directions maintaining their masses  $m_1$  and  $m_2$ .

The interaction of P1 and P2 takes place in an infinitesimal time-interval  $(t'_0 - \varepsilon, t'_0 + \varepsilon)$ ,  $\varepsilon \rightarrow 0^+$ . In this interval the Minkowski forces acting on each particle have the form of a delta distribution around  $t'_0$ . We can write:

$$\frac{d}{dt'} P_1'^j = \frac{1}{\gamma(v_1')} K_{12}'^j \delta(t' - t'_0), \quad \frac{d}{dt'} P_2'^j = \frac{1}{\gamma(v_2')} K_{21}'^j \delta(t' - t'_0)$$

...where  $K_{12}'^j, K_{21}'^j$  are constants.

By adding these relations, integrating from  $t'_0 - \varepsilon_1$  to  $t'_0 + \varepsilon_2$ ,  $\varepsilon_1, \varepsilon_2 > 0$  and remembering that at  $t'_0$  the velocities of P1 and P2 equal to zero, we obtain the subsequent equations:

$$(P_1^j + P_2^j)_{t'_0 + \varepsilon_1} - (P_1^j + P_2^j)_{t'_0 - \varepsilon_2} = K'_{12}{}^j + K'_{21}{}^j$$

$$\lim_{\varepsilon_1 \rightarrow 0} \left( (P_1^j + P_2^j)_{t'_0 + \varepsilon_1} - (P_1^j + P_2^j)_{t'_0 - \varepsilon_2} \right) = 0 \Rightarrow K'_{12}{}^j + K'_{21}{}^j = 0$$

Hence, the total spatial momentum is the same before and after the interaction:

$$(P_1^j + P_2^j)_{t'_0 + \varepsilon_1} = (P_1^j + P_2^j)_{t'_0 - \varepsilon_2} = 0 \quad (2.2a)$$

...and:

$$K'_{12}{}^j + K'_{21}{}^j = 0 \quad (2.2b)$$

Assume that the double-primed quantities symbolize the situation of the system after the P1-P2 interaction, in the CMS. Then, from 2.2a we infer that:

$$m_1 \gamma(v'_1) v'^j_1 + m_2 \gamma(v'_2) v'^j_2 = m_1 \gamma(v''_1) v''^j_1 + m_2 \gamma(v''_2) v''^j_2 \quad (2.2c)$$

From 1.3, 1.2, and 2.2b, it is implied that:

$$\frac{d}{dt'} (m_1 c \gamma(v'_1) + m_2 c \gamma(v'_2)) = \frac{1}{\gamma(v'_1)} K'_{12}{}^0 + \frac{1}{\gamma(v'_2)} K'_{21}{}^0 = \sum_{j=1}^3 \left( \frac{c}{\gamma(v'_1)} v'^j_1 - \frac{c}{\gamma(v'_2)} v'^j_2 \right) K'_{12}{}^j \delta(t' - t'_0)$$

By integrating from  $t'_0 - \varepsilon_1$  to  $t'_0 + \varepsilon_2$ ,  $\varepsilon_1, \varepsilon_2 > 0$  we obtain:

$$(m_1 c \gamma(v''_1) + m_2 c \gamma(v''_2)) - (m_1 c \gamma(v'_1) + m_2 c \gamma(v'_2)) = c \sum_{j=1}^3 \left( \frac{1}{\gamma(v'_1)} v'^j_1 - \frac{1}{\gamma(v'_2)} v'^j_2 \right) K'_{12}{}^j \Big|_{t'=t'_0} = 0$$

We conclude that the total energy of the system is the same before and after the P1-P2 interaction:

$$\begin{aligned} m_1 c \gamma(v'_1) + m_2 c \gamma(v'_2) &= m_1 c \gamma(v''_1) + m_2 c \gamma(v''_2) \\ \text{or: } \frac{E'_1}{c} + \frac{E'_2}{c} &= \frac{E''_1}{c} + \frac{E''_2}{c} \end{aligned} \quad (2.3)$$

From 2.2c and 2.3 we deduce that in our model, the total four-momentum is invariant during the collision, for any choice of the inertial Cartesian system of reference.

P1 and P2 merge in their center of mass. In the CMS, this happens at the time  $t'_0$ . At this moment, both velocities of the particles equal to zero. The coordinates of the four-momentum for each particle are ( $\gamma(0) = 1$ ):

$$P'_1(t'_0) \rightarrow m_1 (c, 0, 0, 0) \text{ and } P'_2(t'_0) \rightarrow m_2 (c, 0, 0, 0)$$

Let  $t_0$  be the corresponding moment in the lab-system (LS) that P1 and P2 merge (figures 2 and 3). Let  $[\Lambda_\mu{}^\nu]$  be the Lorentz matrix relating the lab-system with the center of mass system. The spatial axes of the CMS and the LS are parallel, and CMS moves along the  $x^1$  axis. Hence, the matrix  $[\Lambda_\mu{}^\nu]$  has the form:

$$[\Lambda_\mu{}^\nu] = \begin{pmatrix} \cosh \theta & -\sinh \theta & 0 & 0 \\ -\sinh \theta & \cosh \theta & 0 & 0 \\ 0 & 0 & 1 & 0 \\ 0 & 0 & 0 & 1 \end{pmatrix} \quad (2.4)$$

The coordinates  $P^\mu$  of the four-momentum for each particle in the lab-system at  $t_0$ , are calculated by the equations:  $P^\mu(t_0) = P'^\nu(t'_0) \Lambda_\nu{}^\mu$

We obtain:

$$\gamma(v_1) \Big|_{t_0} = \gamma(v_2) \Big|_{t_0} = \Lambda_0^0, \quad \gamma(v_1) v_1^1 \Big|_{t_0} = \gamma(v_2) v_2^1 \Big|_{t_0} = c \Lambda_0^1 \Rightarrow v_1^1 = v_2^1, \quad v_1^2 = v_2^2 = 0, \quad v_1^3 = v_2^3 = 0$$

We conclude that in the lab-system, at the time  $t_0$  when P1 and P2 merge, their velocities are equal.

The spatial part of the equations of motion, in whichever inertial Cartesian reference frame, are of the form:

$$\frac{d}{dt}(m_1\gamma_1\vec{v}_1) = \frac{1}{\gamma_1}\vec{K}_{12}\delta(t-t_0) \stackrel{\text{def}}{=} \vec{F}_{12}, \quad \frac{d}{dt}(m_2\gamma_2\vec{v}_2) = \frac{1}{\gamma_2}\vec{K}_{21}\delta(t-t_0) \stackrel{\text{def}}{=} \vec{F}_{21}$$

...where:  $\vec{K}_{12} + \vec{K}_{21} = 0$  and:  $\vec{v}_1(t_0) = \vec{v}_2(t_0)$

In the particular inertial frame, define the "angular momentum" of the system, by the usual in the Newtonian Mechanics, way:

$$\vec{L} = \vec{r}_1 \times \vec{P}_1 + \vec{r}_2 \times \vec{P}_2 = \vec{r}_1 \times (m_1\gamma_1\vec{v}_1) + \vec{r}_2 \times (m_2\gamma_2\vec{v}_2)$$

It holds:

$$\frac{d\vec{L}}{dt} = \vec{r}_1 \times \vec{F}_{12} + \vec{r}_2 \times \vec{F}_{21}$$

By integrating with time in the interval  $[t_0 - \varepsilon_1, t_0 + \varepsilon_2]$ , and taking into account that:

$$\vec{r}_1(t_0) = \vec{r}_2(t_0), \quad \gamma(v_1)|_{t_0} = \gamma(v_2)|_{t_0}$$

...we obtain the equation:

$$\vec{L}(t_0 + \varepsilon_1) - \vec{L}(t_0 - \varepsilon_2) = \left( \frac{1}{\gamma_1}\vec{r}_1 \times \vec{K}_{12} + \frac{1}{\gamma_2}\vec{r}_2 \times \vec{K}_{21} \right)_{t=t_0} = 0$$

We deduce that the "angular momentum"  $\vec{L}$  of the system is conserved. If the initial positions and velocities of P1 and P2 lie on a certain plane, the motion of the particles takes place on that plane.

[Return to the contents](#)

### Paragraph 3: The relativistic model of two-particle elastic collision

In our model, the lab-inertial system is symbolized (O,x). Point O is the origin of the spatial coordinates; its world-line is determined by the curve  $(ct, 0, 0, 0) \leftrightarrow O$  of the coordinate space  $R^4$ . The parameter  $t$  is the world time indicated by all the clocks placed at the spatial points of the Minkowski space  $M$ .

At  $t=0$ , particle P1 is at the point  $P_0 \in M$  with coordinates  $(0, -a, 0, 0)$ ,  $a > 0$ . P1 is moving toward O with constant velocity  $v_0$ ; its world line for  $t < t_0 = \frac{a}{v_0}$ , is determined by the curve of the

coordinate space with the analytic expression:

$$x_{p1}(t) = (ct, -a + v_0t, 0, 0), \quad t < t_0 \quad (3.1a)$$

Particle P2 is at rest at the origin O of the lab-system. For  $t < t_0$ , its world line is determined by the curve of  $R^4$ :

$$x_{p2}(t) = (ct, 0, 0, 0), \quad t < t_0 \quad (3.1b)$$

When P1 reaches infinitely close to O, the particles interact, and they emerge with final velocities  $\vec{v}_1, \vec{v}_2$ . Their world lines in the coordinate space  $R^4$  for  $t > t_0 = \frac{a}{v_0}$  are of the form:

$$x_{p1}(t) = \left( ct, \vec{v}_{1x} \left( t - \frac{a}{v_0} \right), \vec{v}_{1y} \left( t - \frac{a}{v_0} \right), 0 \right) \quad (3.1c)$$

$$x_{p2}(t) = \left( ct, \vec{v}_{2x} \left( t - \frac{a}{v_0} \right), \vec{v}_{2y} \left( t - \frac{a}{v_0} \right), 0 \right) \quad (3.1d)$$

We are to determine the velocities of P1 and P2 after their interaction. This is accomplished by implementing the following steps:

Step 1: Calculate the four-momentum of P1 and P2 in the CMS before their collision.

Step 2: Calculate the four-momentum of each particle in CMS after their collision and derive the analytic expression of each world line in CMS.

Step 3: Calculate the four-momentum of P1 and P2 in the LS after their collision. Derive the analytic expression of the particles' world lines in LS.

### Step 1

Derive the Lorentz transformation connecting LS with CMS. Then, deduce the four-momentum of each particle in CMS before their collision

We use alternatively the symbolism:  $P^1 \equiv P_x$ ,  $P^2 \equiv P_y$ ,  $P^3 \equiv P_z$ ,  $v^1 \equiv v_x$ ... etc.

The four-momentum of each particle in LS before the collision is expressed by the following equations; see ref. 4 and ref. 5: [Physics Problems \(sch.gr\)](#)

For  $t < t_0 = \frac{a}{v_0}$ :

$$P_1 = e_0 \frac{E_1}{c} + e_1 P_{1x}, E_1 = m_1 c^2 \gamma(v_0), P_{1x} = m_1 \gamma(v_0) v_0 \quad (3.2a)$$

$$P_2 = e_0 \frac{E_2}{c}, E_2 = m_2 c^2 \quad (3.2b)$$

...where  $\{e_0, e_1, e_2, e_3\}$  the basis vectors of the tangent vector space at any point of the Minkowski continuum  $M$  in the lab-system.

In CMS, the total spatial momentum of P1 and P2 is zero. For  $t < t_0$ :

$$P'_{1x} + P'_{2x} = 0 \quad (3.3a)$$

The analytic expression of the Lorentz transformation connecting CMS and LS is written:

$$x''^\mu = x^\nu \Lambda^\mu_\nu + x_0^\mu \quad (3.3b)$$

...where  $[\Lambda^\mu_\nu]$  is the inverse of the matrix  $[\Lambda_\nu^\mu]$  (relation 2.5). We must determine the parameter

$\theta$  and the constant quantities  $x_0^\mu$   $\mu = 0, 1, 2, 3$

Under the coordinate transformation with a Jacobian matrix given by 2.4, the basis vectors of the tangent vector-spaces of  $M$ , are transformed according to the relations <sup>(4,5)</sup>:

$$e'_\mu \Delta x''^\mu = e'_\mu \Delta x^\nu \Lambda^\mu_\nu = e_\nu \Delta x^\nu \Rightarrow e'_\nu = e'_\mu \Lambda^\mu_\nu, e'_\mu = e_\nu \Lambda^\nu_\mu$$

Hence, from 3.2a, 3.2b, 3.3a, we obtain:

$$e_0 \left( \frac{E_1}{c} - \Lambda_0^0 \frac{E'_1}{c} - \Lambda_1^0 P'_{1x} \right) + e_1 \left( P_{1x} - \Lambda_0^1 \frac{E'_1}{c} - \Lambda_1^1 P'_{1x} \right) = 0$$

$$e_0 \left( \frac{E_2}{c} - \Lambda_0^0 \frac{E'_2}{c} - \Lambda_1^0 P'_{2x} \right) + e_1 \left( -\Lambda_0^1 \frac{E'_2}{c} - \Lambda_1^1 P'_{2x} \right) = 0$$

$$\tanh \theta = -c \frac{P_{1x}}{E_1 + E_2} \quad (3.4a)$$

$$\frac{E'_1}{c} = \frac{E_1}{c} \Lambda_1^1 - P_{1x} \Lambda_1^0, P'_{1x} = -\frac{E_1}{c} \Lambda_0^1 + P_{1x} \Lambda_0^0 \quad (3.4b)$$

$$\frac{E'_2}{c} = \frac{E_2}{c} \Lambda_0^0, P'_{2x} = -\frac{E_2}{c} \Lambda_0^1 \quad (3.4c)$$

Check that the length of the spatial momentum of each particle in CMS is:

$$\|\vec{P}'_1\| = \|\vec{P}'_2\| = |P'_{1x}| = |P'_{2x}| = |P_{1x}| \frac{E_2}{E_1 + E_2} \cosh \theta \quad (3.4d)$$

For the calculation of  $x_0^\mu$  in 3.3b, we think as follows: Map the world lines of P1 and P2 in CMS, before the collision and demand that: a) when P1 is at the point  $(0, -a, 0, 0)$  according to the LS,

then the world time  $t'$  in CMS is zero, b) at the time  $t_0 = \frac{a}{v_0}$ , P1 is at the spatial origin of the LS,

then P1 and P2 are both at the spatial origin of CMS. In the language of mathematics, we write:

From 3.3b:

$$ct' = ct\Lambda_0^0 - x\Lambda_1^0 + x_0^0, \quad x' = -ct\Lambda_0^1 + x\Lambda_1^1 + x_0^1 \quad (3.5)$$

The world line of P1 in CMS:

$$ct'_1 = ct\Lambda_0^0 - (v_0t - a)\Lambda_1^0 + x_0^0, \quad x'_1 = -ct\Lambda_0^1 + (v_0t - a)\Lambda_1^1 + x_0^1 \quad (3.6a)$$

The world line of P2 in CMS:

$$ct'_2 = ct\Lambda_0^0 + x_0^0, \quad x'_2 = -ct\Lambda_0^1 + x_0^1 \quad (3.6b)$$

From 3.6a, for  $t = 0, x_1 = -a$  we demand  $t'_1 = 0$  It is implied that:  $x_0^0 = -a\Lambda_1^0$

For  $t = \frac{a}{v_0}$  we demand  $x'_1 = 0$  Hence:  $x_0^1 = \frac{ca}{v_0}\Lambda_1^1$

We infer that 3.5 takes the final form:

$$ct' = ct\Lambda_0^0 - \Lambda_1^0(x + a), \quad x' = -c\Lambda_0^1\left(t - \frac{a}{v_0}\right) + x\Lambda_1^1 \quad (3.7a)$$

The non-zero matrix elements of  $[\Lambda_\mu^\nu]$  are:

$$\Lambda_0^0 = \Lambda_1^1 = \cosh\theta, \quad \Lambda_0^1 = \Lambda_1^0 = -\sinh\theta, \quad \Lambda_2^2 = \Lambda_3^3 = 1$$

The inverse of 3.7a is determined by the transformation:

$$ct = \Lambda_0^0(ct' + a\Lambda_1^0) + \Lambda_1^0\left(x' - \Lambda_0^1\frac{ac}{v_0}\right) \quad (3.7b)$$

$$x = \Lambda_0^1(ct' + a\Lambda_1^0) + \Lambda_1^1\left(x' - \Lambda_0^1\frac{ac}{v_0}\right)$$

The world lines of P1 and P2 for  $t < \frac{a}{v_0}$ , in the CMS, take the form:

$$ct'_1 = ct\left(\Lambda_0^0 - \frac{v_0}{c}\Lambda_1^0\right), \quad x'_1 = c\left(t - \frac{a}{v_0}\right)\left(-\Lambda_0^1 + \frac{v_0}{c}\Lambda_1^1\right) \quad (3.8a)$$

$$ct'_2 = ct\Lambda_0^0 - a\Lambda_1^0, \quad x'_2 = -\Lambda_0^1c\left(t - \frac{a}{v_0}\right) \quad (3.8b)$$

In the analytic expressions 3.8a and b, the free parameter  $t$  is the world time being measured by the clocks fixed at the spatial-points of the lab-system. One can confirm that P1 and P2 arrive instantaneously at the origin of their center of mass system (CMS).

## Step 2

*Calculation of the four-momentum and the analytic expression of the world line for each particle in the CMS after the collision*

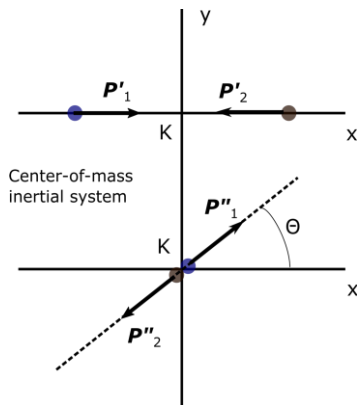


Figure 2: The P1-P2 collision in their center of mass frame.

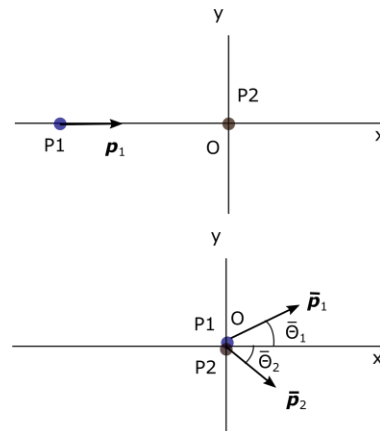


Figure 3: Motion of the particles after their collision, in the lab-system.

The double-primed quantities concern the situation of the system after the collision, in the CMS. According to paragraph 2, during the particles' collision the following statements are true:

- The four-momentum of the system is conserved.
- The total spatial momentum in the CMS equals zero.
- The direction of each spatial momentum does change: the spatial momentums after the collision are placed on an axis forming an angle  $\Theta$  with the x-axis. The value of  $\Theta$  depends on the details of the interaction-mechanism between P1 and P2. In our application  $\Theta$  is considered as an arbitrary parameter controlled by the user.

In the CMS, it holds:

$$P_1'' = e_0 \frac{E_1''}{c} + e_1 P_{1x}'' + e_2 P_{1y}'', P_2'' = e_0 \frac{E_2''}{c} + e_1 P_{2x}'' + e_2 P_{2y}''$$

$$E_1'' + E_2'' = E_1' + E_2', P_{1x}'' + P_{2x}'' = 0, P_{1y}'' + P_{2y}'' = 0$$

$$\frac{E_1''^2}{c^2} - \vec{P}_1''^2 = m_1^2 c^2, \frac{E_2''^2}{c^2} - \vec{P}_2''^2 = m_2^2 c^2$$

$$\frac{1}{c^2} (E_1'' - E_2'') (E_1'' + E_2'') = (m_1^2 - m_2^2) c^2, E_1'' - E_2'' = \frac{(m_1^2 - m_2^2) c^4}{E_1' + E_2'}$$

Hence:

$$E_1'' = \frac{1}{2} \left( E_1' + E_2' + \frac{(m_1^2 - m_2^2) c^4}{E_1' + E_2'} \right), E_2'' = \frac{1}{2} \left( E_1' + E_2' - \frac{(m_1^2 - m_2^2) c^4}{E_1' + E_2'} \right) \quad (3.9a)$$

The length of each spatial momentum is calculated by the following equations:

$$\|\vec{P}_1''\| = \sqrt{\frac{E_1''^2}{c^2} - m_1^2 c^2}, \|\vec{P}_2''\| = \sqrt{\frac{E_2''^2}{c^2} - m_2^2 c^2} \quad (3.9b)$$

...and their coordinates (figure 2):

$$P_{1x}'' = -P_{2x}'' = \|\vec{P}_1''\| \cos \Theta, P_{1y}'' = -P_{2y}'' = \|\vec{P}_1''\| \sin \Theta \quad (3.9c)$$

Check that:  $\|\vec{P}_1''\| = \|\vec{P}_2''\|$

We now derive the analytic expression of the particles' world lines before and after the collision, in the CMS, with free parameter the world time  $t$  measured in the LS. The following equations are true:

$$\gamma(v_1'') = \frac{E_1''}{m_1 c^2}, v_{1x}'' = \frac{P_{1x}''}{m_1 \gamma(v_1'')} = c^2 \frac{P_{1x}''}{E_1''}, v_{1y}'' = \frac{P_{1y}''}{m_1 \gamma(v_1'')} = c^2 \frac{P_{1y}''}{E_1''}, v_{1z}'' = 0$$

$$\gamma(v_2'') = \frac{E_2''}{m_2 c^2}, v_{2x}'' = \frac{P_{2x}''}{m_2 \gamma(v_2'')} = c^2 \frac{P_{2x}''}{E_2''}, v_{2y}'' = \frac{P_{2y}''}{m_2 \gamma(v_2'')} = c^2 \frac{P_{2y}''}{E_2''}, v_{2z}'' = 0$$

From 3.8a and b, and the previous equations, we deduce the analytic expressions:

$$ct_1' = ct \left( \Lambda_0^0 - \frac{v_0}{c} \Lambda_1^0 \right), x_1' = \begin{cases} c \left( -\Lambda_0^1 + \Lambda_1^1 \frac{v_0}{c} \right) \left( t - \frac{a}{v_0} \right) & \text{for } t < \frac{a}{v_0} \\ v_{1x}'' \left( \Lambda_0^0 - \frac{v_0}{c} \Lambda_1^0 \right) \left( t - \frac{a}{v_0} \right) & \text{for } t > \frac{a}{v_0} \end{cases} \quad (3.9d)$$

$$y_1' = \begin{cases} 0 & \text{for } t < \frac{a}{v_0} \\ v_{1y}'' \left( \Lambda_0^0 - \frac{v_0}{c} \Lambda_1^0 \right) \left( t - \frac{a}{v_0} \right) & \text{for } t > \frac{a}{v_0} \end{cases}, z_1' = 0$$



$$ct'_2 = ct\Lambda_0^0 - a\Lambda_1^0, x'_2 = \begin{cases} -\Lambda_0^1 c \left( t - \frac{a}{v_0} \right) & \text{for } t < \frac{a}{v_0} \\ \Lambda_0^0 v_{2x}'' \left( t - \frac{a}{v_0} \right) & \text{for } t > \frac{a}{v_0} \end{cases} \quad (3.9e)$$

$$y'_2 = \begin{cases} 0 & \text{for } t < \frac{a}{v_0} \\ \Lambda_0^0 v_{2y}'' \left( t - \frac{a}{v_0} \right) & \text{for } t > \frac{a}{v_0} \end{cases}, z'_2 = 0$$

### Step 3

Calculation of the four-momentum of P1 and P2 in the LS after their collision - Derivation of the analytic expression of the particles' world lines in the LS

The quantities with a bar concern the situation of the system after the P1-P2 collision, in the lab-system (LS). According to the previous steps, we obtain:

$$\bar{P}_1^\mu = P_1''^\nu \Lambda_\nu^\mu, \bar{P}_2^\mu = P_2''^\nu \Lambda_\nu^\mu$$

$$\frac{\bar{E}_1}{c} = \frac{E_1''}{c} \Lambda_0^0 + P_{1x}'' \Lambda_1^0, \bar{P}_{1x} = \frac{E_1''}{c} \Lambda_0^1 + P_{1x}'' \Lambda_1^1, \bar{P}_{1y} = P_{1y}'' \quad (3.10a)$$

$$\frac{\bar{E}_2}{c} = \frac{E_2''}{c} \Lambda_0^0 + P_{2x}'' \Lambda_1^0, \bar{P}_{2x} = \frac{E_2''}{c} \Lambda_0^1 + P_{2x}'' \Lambda_1^1, \bar{P}_{2y} = P_{2y}'' \quad (3.10b)$$

The spatial velocities of P1 and P2 in LS arise by the previous equations:

$$\gamma(\bar{v}_1) = \frac{\bar{E}_1}{m_1 c^2}, \bar{v}_1 = c \left( 1 - \frac{1}{(\bar{E}_1 / m_1 c^2)^2} \right)^{1/2} \quad (3.11a)$$

$$\bar{v}_{1x} = \frac{\bar{P}_{1x}}{m_1 \gamma(\bar{v}_1)} = c^2 \frac{\bar{P}_{1x}}{\bar{E}_1}, \bar{v}_{1y} = \frac{\bar{P}_{1y}}{m_1 \gamma(\bar{v}_1)} = c^2 \frac{\bar{P}_{1y}}{\bar{E}_1}$$

$$\gamma(\bar{v}_2) = \frac{\bar{E}_2}{m_2 c^2}, \bar{v}_2 = c \left( 1 - \frac{1}{(\bar{E}_2 / m_2 c^2)^2} \right)^{1/2} \quad (3.11b)$$

$$\bar{v}_{2x} = \frac{\bar{P}_{2x}}{m_2 \gamma(\bar{v}_2)} = c^2 \frac{\bar{P}_{2x}}{\bar{E}_2}, \bar{v}_{2y} = \frac{\bar{P}_{2y}}{m_2 \gamma(\bar{v}_2)} = c^2 \frac{\bar{P}_{2y}}{\bar{E}_2}$$

From 3.11a, b and 3.1a, b we derive the world lines of P1 and P2 in LS, before and after their collision (figure 3):

$$x_{P1}(t) = \begin{cases} (ct, -a + v_0 t, 0, 0), & t < \frac{a}{v_0} \\ \left( ct, \bar{v}_{1x} \left( t - \frac{a}{v_0} \right), \bar{v}_{1y} \left( t - \frac{a}{v_0} \right), 0 \right), & t > \frac{a}{v_0} \end{cases} \quad (3.12a)$$

$$x_{P2}(t) = \begin{cases} (ct, 0, 0, 0), & t < \frac{a}{v_0} \\ \left( ct, \bar{v}_{2x} \left( t - \frac{a}{v_0} \right), \bar{v}_{2y} \left( t - \frac{a}{v_0} \right), 0 \right), & t > \frac{a}{v_0} \end{cases} \quad (3.12b)$$

The angles  $\bar{\Theta}_1, \bar{\Theta}_2, \bar{\Theta} = \bar{\Theta}_1 + \bar{\Theta}_2$  depicted in figure 3 are calculated by the equations:

$$\bar{\Theta}_1 = \cos^{-1} \left( \frac{\bar{v}_{1x}}{\bar{v}_1} \right), \bar{\Theta}_2 = \cos^{-1} \left( \frac{\bar{v}_{2x}}{\bar{v}_2} \right), \bar{\Theta} = \cos^{-1} \left( \frac{\bar{v}_1 \cdot \bar{v}_2}{\bar{v}_1 \bar{v}_2} \right), \bar{\Theta}_1, \bar{\Theta}_2, \bar{\Theta} \in (-\pi, \pi] \quad (3.13)$$

[Return to the contents](#)

#### Paragraph 4: The Newtonian model of two-particle elastic collision

According to the Newtonian point of view, the steps of paragraph 3 are modified as follows:

Step 1: Derive the Galilean transformations that relate the lab-system (LS) with the center-of-mass system (CMS) of particles P1 and P2. Calculate the energy and the momentum of each particle in CMS, before their collision.

Step 2: Calculate the energies and the momenta of P1 and P2 in the CMS, after their collision. Derive the analytic expressions of their paths in the CMS.

Step 3: Calculate the energies and the momenta of P1 and P2 in the LS, after their collision. Derive the analytic expression of the parametric equations of motion for each particle in the LS.

##### Step 1

*The Galilean transformations that relate the lab-system (LS) with the center-of-mass system (CMS) of particles P1 and P2 - Calculation of the energy and momentum of each particle in the CMS before the P1-P2 collision*

The analytic expression of the Galileo transformation relating LS and CMS is determined by the equations (figure 4):

$$t' = t, x'_N = -vt + x_N + x_0, y'_N = y_N, z'_N = z_N \quad (4.1)$$

...where  $v$  denotes the center of mass velocity in the LS.

The analytic expressions of the particles' world lines in the LS

before their collision  $\left(t < \frac{a}{v_0}\right)$  are:

$$\begin{aligned} x_{N1} &= v_0 t - a, y_{N1} = 0, z_{N1} = 0 \\ x_{N2} &= 0, y_{N2} = 0, z_{N2} = 0 \end{aligned} \quad (4.2)$$

The same paths in the CMS are expressed by the equations:

$$x'_{N1} = (-v + v_0)t - a + x_0, v'_{N1} = -v + v_0$$

$$x'_{N2} = -vt + x_0, v'_{N2} = -v$$

From the definition of the center of mass, we result that:

$$m_1 x'_{N1} + m_2 x'_{N2} = 0, m_1 v'_{N1} + m_2 v'_{N2} = 0$$

$$m_1(-v + v_0) - m_2 v = 0, v = \frac{m_1}{m_1 + m_2} v_0$$

$$m_1(-a + x_0) + m_2 x_0 = 0, x_0 = \frac{m_1}{m_1 + m_2} a$$

Hence, 4.1 is written:

$$\begin{aligned} t' &= t, x'_N = -\frac{m_1}{m_1 + m_2} v_0 \left(t - \frac{a}{v_0}\right) + x_N \\ y'_N &= y_N, z'_N = z_N \end{aligned} \quad (4.1a)$$

The paths of P1 and P2 for  $t < \frac{a}{v_0}$  in the CMS are determined by the equations:

$$\begin{aligned} x'_{N1} &= \frac{m_2}{m_1 + m_2} v_0 \left(t - \frac{a}{v_0}\right), v'_{N1x} = \frac{m_2}{m_1 + m_2} v_0 \\ x'_{N2} &= -\frac{m_1}{m_1 + m_2} v_0 \left(t - \frac{a}{v_0}\right), v'_{N2x} = -\frac{m_1}{m_1 + m_2} v_0 \end{aligned} \quad (4.3)$$

The energies and momentums in the CMS:

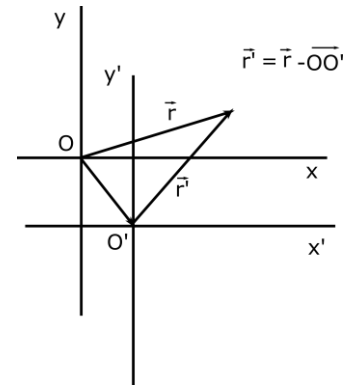


Figure 4: Connection of the lab-system with the center of mass frame.

$$E'_{N1} = \frac{m_1 m_2^2}{2(m_1 + m_2)^2} v_0^2, E'_{N2} = \frac{m_1 m_1^2}{2(m_1 + m_2)^2} v_0^2 \quad (4.4)$$

$$P'_{N1x} = \frac{m_1 m_2}{m_1 + m_2} v_0, P'_{N2x} = -\frac{m_1 m_2}{m_1 + m_2} v_0, P'_{N1y} = P'_{N1z} = P'_{N2y} = P'_{N2z} = 0$$

### Step 2

Calculation of the energies and momenta of P1 and P2 in the CMS, after their collision – The analytic expressions of the P1 and P2 paths, in the CMS

According to the energy and momentum conservation, we obtain (figure 2):

$$\vec{P}'_{N1} + \vec{P}'_{N2} = \vec{P}'_{N1} + \vec{P}'_{N2} = 0 \quad (4.5a)$$

$$E'_{N1} + E'_{N2} = E''_{N1} + E''_{N2}, \frac{P'^2_{N1}}{2m_1} + \frac{P'^2_{N2}}{2m_2} = \frac{P''^2_{N1}}{2m_1} + \frac{P''^2_{N2}}{2m_2}$$

$$P'^2_{N1} = P''^2_{N1} = P'^2_{N2} = P''^2_{N2} \quad (4.5b)$$

...where:  $P_{N1} = \|\vec{P}'_{N1}\|, \dots$

Hence, the velocities of P1 and P2 after their collision  $\left(t > \frac{a}{v_0}\right)$ , in the CMS are calculated by the relations:

$$P''_{N1} = P'_{N1}, v''_{N1} = \frac{m_2}{m_1 + m_2} v_0, P''_{N2} = P'_{N2}, v''_{N2} = \frac{m_1}{m_1 + m_2} v_0 \quad (4.6)$$

$$v''_{N1x} = \frac{m_2}{m_1 + m_2} v_0 \cos \Theta, v''_{N1y} = \frac{m_2}{m_1 + m_2} v_0 \sin \Theta, v''_{N1z} = 0 \quad (4.7a)$$

$$v''_{N2x} = -\frac{m_1}{m_1 + m_2} v_0 \cos \Theta, v''_{N2y} = -\frac{m_1}{m_1 + m_2} v_0 \sin \Theta, v''_{N2z} = 0 \quad (4.7b)$$

The parametric equations of the motion, for each particle in CMS before and after their collision, are determined by the equations (4.8a and b):

$$x'_{N1} = \begin{cases} \frac{m_2}{m_1 + m_2} v_0 \left(t - \frac{a}{v_0}\right) & \text{for } t < \frac{a}{v_0} \\ \frac{m_2}{m_1 + m_2} v_0 \left(t - \frac{a}{v_0}\right) \cos \Theta & \text{for } t > \frac{a}{v_0} \end{cases} \quad y'_{N1} = \begin{cases} 0 & \text{for } t < \frac{a}{v_0} \\ \frac{m_2}{m_1 + m_2} v_0 \left(t - \frac{a}{v_0}\right) \sin \Theta & \text{for } t > \frac{a}{v_0} \end{cases} \quad (4.8a)$$

$$x'_{N2} = \begin{cases} -\frac{m_1}{m_1 + m_2} v_0 \left(t - \frac{a}{v_0}\right) & \text{for } t < \frac{a}{v_0} \\ -\frac{m_1}{m_1 + m_2} v_0 \left(t - \frac{a}{v_0}\right) \cos \Theta & \text{for } t > \frac{a}{v_0} \end{cases} \quad y'_{N2} = \begin{cases} 0 & \text{for } t < \frac{a}{v_0} \\ -\frac{m_1}{m_1 + m_2} v_0 \left(t - \frac{a}{v_0}\right) \sin \Theta & \text{for } t > \frac{a}{v_0} \end{cases} \quad (4.8b)$$

$z'_{N1} = 0$  and  $z'_{N2} = 0$  for any  $t$ .

### Step 3

Calculation of the energies and momenta in the LS after the collision – Derivation of the paths' analytic expressions in the LS

The inverse of the Galilean transformation 4.1a is:

$$x_N = \frac{m_1}{m_1 + m_2} v_0 \left(t - \frac{a}{v_0}\right) + x'_N, y_N = y'_N, z_N = z'_N$$

This implies the following analytic expressions for the paths of P1 and P2 in the lab-system:

$$x_{N1} = \begin{cases} v_0 \left( t - \frac{a}{v_0} \right) & \text{for } t < \frac{a}{v_0} \\ \frac{m_1 + m_2 \cos \Theta}{m_1 + m_2} v_0 \left( t - \frac{a}{v_0} \right) & \text{for } t > \frac{a}{v_0} \end{cases} \quad y_{N1} = \begin{cases} 0 & \text{for } t < \frac{a}{v_0} \\ \frac{m_2 v_0 \sin \Theta}{m_1 + m_2} \left( t - \frac{a}{v_0} \right) & \text{for } t > \frac{a}{v_0} \end{cases} \quad (4.8a)$$

$$x_{N2} = \begin{cases} 0 & \text{for } t < \frac{a}{v_0} \\ \frac{m_1 v_0 (1 - \cos \Theta)}{m_1 + m_2} \left( t - \frac{a}{v_0} \right) & \text{for } t > \frac{a}{v_0} \end{cases} \quad y_{N2} = \begin{cases} 0 & \text{for } t < \frac{a}{v_0} \\ -\frac{m_1 v_0 \sin \Theta}{m_1 + m_2} \left( t - \frac{a}{v_0} \right) & \text{for } t > \frac{a}{v_0} \end{cases} \quad (4.8b)$$

$z_{N1} = z_{N2} = 0$  for any  $t$ .

The velocities of P1 and P2 in the LS are:

$$v_{N1x} = \begin{cases} v_0 & \text{for } t < \frac{a}{v_0} \\ \frac{m_1 + m_2 \cos \Theta}{m_1 + m_2} v_0 & \text{for } t > \frac{a}{v_0} \end{cases} \quad v_{N1y} = \begin{cases} 0 & \text{for } t < \frac{a}{v_0} \\ \frac{m_2 v_0 \sin \Theta}{m_1 + m_2} & \text{for } t > \frac{a}{v_0} \end{cases} \quad (4.9a)$$

$$v_{N2x} = \begin{cases} 0 & \text{for } t < \frac{a}{v_0} \\ \frac{m_1 v_0 (1 - \cos \Theta)}{m_1 + m_2} & \text{for } t > \frac{a}{v_0} \end{cases} \quad v_{N2y} = \begin{cases} 0 & \text{for } t < \frac{a}{v_0} \\ -\frac{m_1 v_0 \sin \Theta}{m_1 + m_2} & \text{for } t > \frac{a}{v_0} \end{cases} \quad (4.9b)$$

The angles formed by the velocities and the x-axis after the P1-P2 interaction are calculated by the equations (figure 3):

$$\tan \bar{\Theta}_{N1} = \frac{m_2 \sin \Theta}{m_1 + m_2 \cos \Theta}, \quad \tan \bar{\Theta}_{N2} = -\frac{\sin \Theta}{1 - \cos \Theta}, \quad \bar{\Theta} = \bar{\Theta}_{N1} + \bar{\Theta}_{N2} \quad (4.9c)$$

The scalar product of the final velocities in LS is:

$$\vec{v}_{N1} \cdot \vec{v}_{N2} = \frac{m_1 (m_1 - m_2)}{(m_1 + m_2)^2} v_0^2 (1 - \cos \Theta) \quad (4.10)$$

The momenta are calculated by the relations:  $\vec{P}_{N1} = m_1 \vec{v}_{N1}$ ,  $\vec{P}_{N2} = m_2 \vec{v}_{N2}$

...and the energies:

$$E_{N1} = \frac{1}{2} m_1 v_{N1}^2, \quad E_{N2} = \frac{1}{2} m_2 v_{N2}^2$$

[Return to the contents](#)

## Paragraph 5: Activities

Define:  $\lambda = \frac{m_2}{m_1}$  ("lambda", in the simulation),  $0.01 \leq \lambda \leq 100$

The light-speed:  $c=1$

The initial speed  $v_0$  of P1 is controlled by the user and takes values in the interval:  $0 < v_0 < 1$

The angle "theta" formed by the final velocity of P1 with the x-axis in of the CMS, is controlled by the user.

1. Record the positions of P1 and P2 in the CMS according to the relativistic and according to the Newtonian model, when the world time in LS is  $t=0$  and  $v_0 = 0.1$ 
  - a) Calculate the time coordinates of P1, P2 in the CMS when the world time of LS is  $t=0$ .
  - b) Calculate the x-coordinates of P1, P2 in the CMS when the world time of LS is  $t=0$ .
  - c) Repeat activities a and b for  $v_0 = 0.6$  and  $v_0 = 0.9$
  - d) Check whether the predictions of the two models converge when  $|v_0| \ll 1$

2. In the context of the relativistic model, for various values of  $v_0$  by your choice, derive the relationship between the readings of the clocks in the LS and the CMS, and check it in the simulation environment.
3. For  $v_0 = 0.9$  and  $lambda=1$  calculate the velocity of the CMS relative to the LS: a) according to the relativistic model, b) according to the Newtonian model. Check if the two predictions converge at the same value when  $v_0 \ll 1$
4. The angle "*theta*" formed by the velocity of P1 with the x-axis in the CMS after the collision, is related to the mechanism of the P1-P2 interaction. In the simulation, the value of *theta* is controlled by the user.
  - a) For  $lambda = 0.8$ ,  $theta = \pi / 3$  and sequentially for  $v_0 = 0.99, v_0 = 0.5, v_0 = 0.1$  calculate the theoretical values of *theta*1 and *theta*2 ( $\bar{\theta}_1, \bar{\theta}_2$ ) according to the relativistic and the Newtonian model, and check your predictions in the virtual environment of the simulation.
  - b) Repeat activity (a) for  $lambda = 0.01, v_0 = 0.9, \theta = \pi / 2$
  - c) Check if the predictions of the two models converge at the same value when  $|v_0| \ll 1$
5. In the context of the Newtonian model, for  $m_1 = m_2$  calculate the value of angle *theta*, for which the expected value of the angle *theta*1 ( $\bar{\theta}_1$ ) is such that  $\tan \bar{\theta}_1 = \sqrt{3} / 3$
6. Prove that in the context of the Newtonian model, for  $m_1 = m_2$  the angle between the final velocities is always equal to  $\pi / 2$  Is this statement true in the context of the relativistic model?
7. For  $lambda = 1, v_0 = 0.99, \theta = \pi / 2$  check the conservation of the total energy and momentum of the system in the LS: a) according to the relativistic model, b) according to the Newtonian model. Do the same for another set of values  $lambda, v_0, \theta$  of your choice.

[Return to the contents](#)

## References

1. Classical Mechanics: Goldstein, Poole & Safko, Addison Wesley, 3d edition.
2. Electrodynamics and Classical Theory of Fields and Particles: A.O. Barut, Dover edition 1980.
3. Introduction to Classical Mechanics with Problems and Solutions: David Morin Harvard University, Cambridge University Press 2008.
4. Einstein's General Theory of Relativity: Oyvind Gron - Sigbjorn Hervik, Springer ed.
5. Introduction to Relativistic Mechanics: Kostas Papamichalis, [Physics Problems \(sch.gr\)](#)