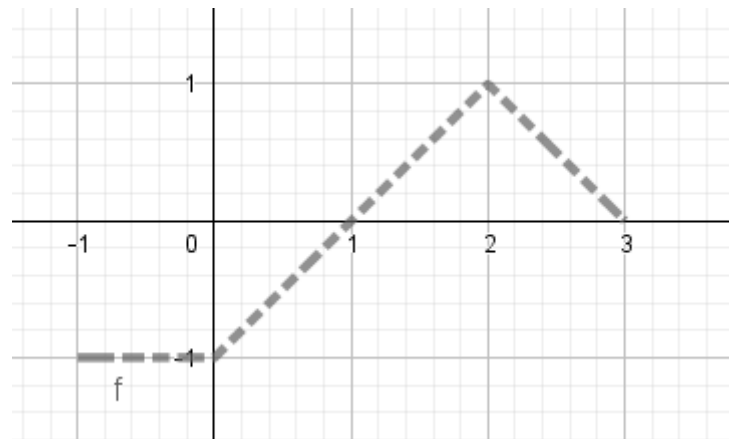
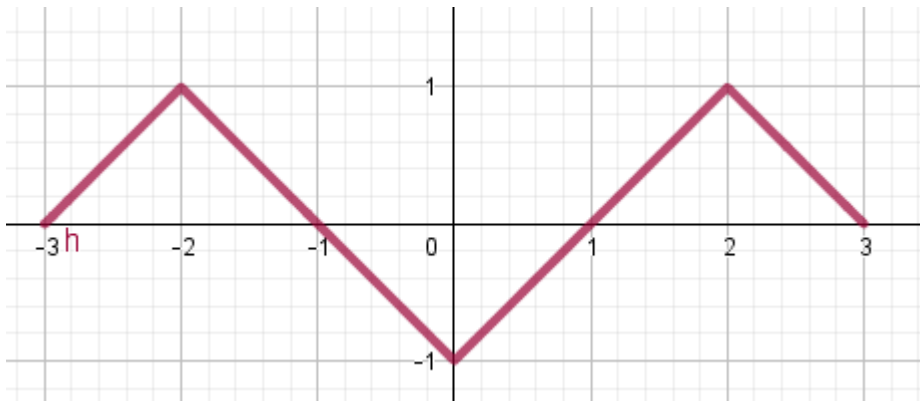


The graph of a function f is shown in the accompanying figure.



- Sketch the graph of the following equation $f(|x|)$.
- Explain geometrically and algebraically that the graph and the formula of $f(|x|)$ are identical to those of h , respectively.



$$h(x) = \begin{cases} x + 3 & : -3 \leq x \leq -2 \\ -x - 1 & : -2 < x \leq 0 \\ x - 1 & : 0 < x \leq 2 \\ -x + 3 & : 2 < x \leq 3 \end{cases}$$